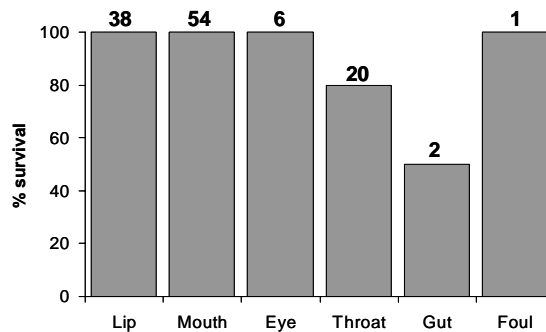


Preliminary results of flathead survival project

The Flathead Survival project is a collaborative project between the Tasmanian Aquaculture and Fisheries Institute and the Queensland Department of Primary Industries and Fisheries. Fishers from Suntag in Queensland, Newtag in NSW and volunteer diary anglers in Tasmania are helping with the project by collecting hooking location data as part of their normal fishing operations.

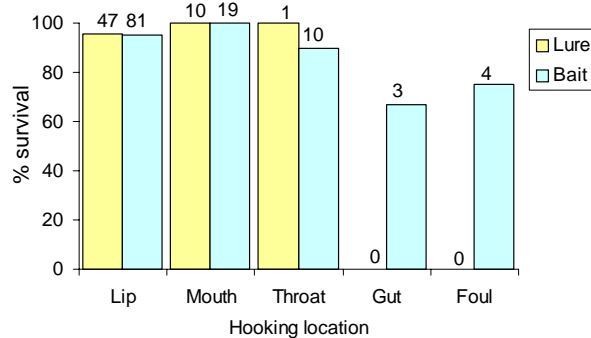
The project recently completed the winter post release survival trials in Tasmania and Queensland and preliminary short term survival rates have been determined for Sand Flathead in Tasmania and Dusky Flathead in Queensland.

Consistent with previous trials, survival rates for Sand Flathead in Tasmania were high (effectively 100%) for shallow hooked fish and the only mortalities were for deep hooked fish (hooked in the throat or gut).



Short term survival rates for Sand Flathead by hooking location (numbers are sample size)

For Dusky Flathead in Queensland 175 fish were held for two days in the Sea World research tank on the Gold Coast. The short term survival rate of the fish caught on bait and lure was about 95% overall.



Short term survival rates for Dusky Flathead by hooking location (numbers are sample size)

For more information on the Tasmania component contact Jeremy Lyle at Jeremy.Lyle@utas.edu.au and for more information on the Queensland component contact Ian Brown at Ian.Brown@dpi.qld.gov.au.