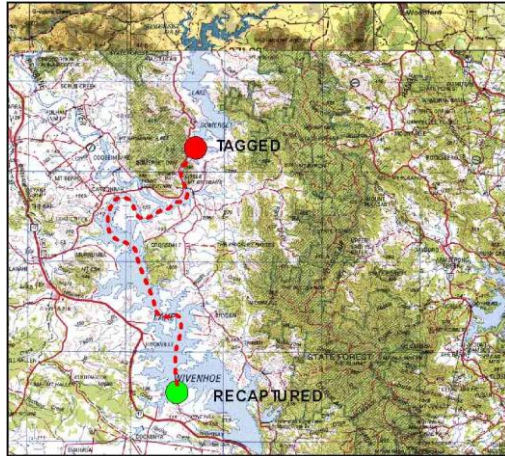




What Happens to Tagged Fish?



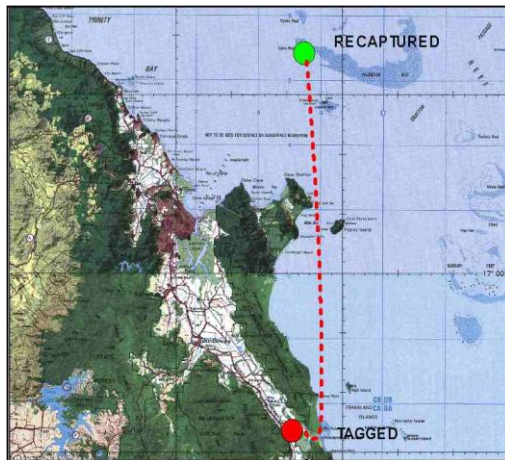
Tag details		Recapture details
Tag	J01865	
Species	Aust Bass (<i>Macquaria novaemaculata</i>)	
Date	1/10/98	24/9/01
Length	310mm	450mm
Location	Lake Somerset	Lake Wivenhoe
Fisher	Bob Carruthers	Alan Zernike
Days Out	1089	
Growth	140mm (0.13mm/day)	
Movement	42 km over dam wall	
Released	No	

Another Bass that has gone over the Somerset dam wall and survived.



Tag details		Recapture details
Tag	K79801	
Species	Black Spot Estuary Cod (<i>Epinephalus malabaricus</i>)	
Date	24/10/97	3/10/01
Length	260mm	620mm
Location	Kin Kin Creek	Noosa River
Fisher	S McDougall	Sandra Wilson
Days Out	1371	
Growth	330mm (0.24mm/day)	
Movement	13 km down river	
Released	No	

Another longer term recapture for this species. This fish was recaptured in a crab pot. It is quite common for this to occur with Estuary Cod.



Tag details		Recapture details
Tag	J72633	
Species	Mangrove Jack (<i>Lutjanus argentimacilatus</i>)	
Date	22/5/00	7/10/01
Length	400mm	420mm
Location	Mulgrave River	Upolu Reef
Fisher	Northern Fisheries	Ron Strang
Days Out	503	
Growth	20mm (0.04mm/day)	
Movement	From river north along coast	
Released	No	

Another offshore recapture of a Mangrove Jack. This one was tagged by Northern Fisheries as part of FRDC project 1999/122.