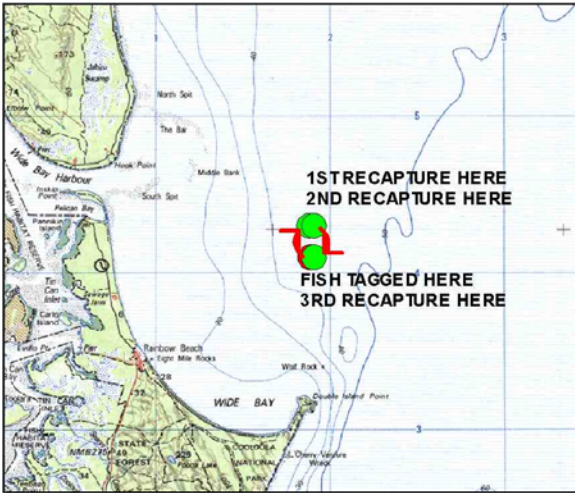




20 November 2002

Bulletin 72



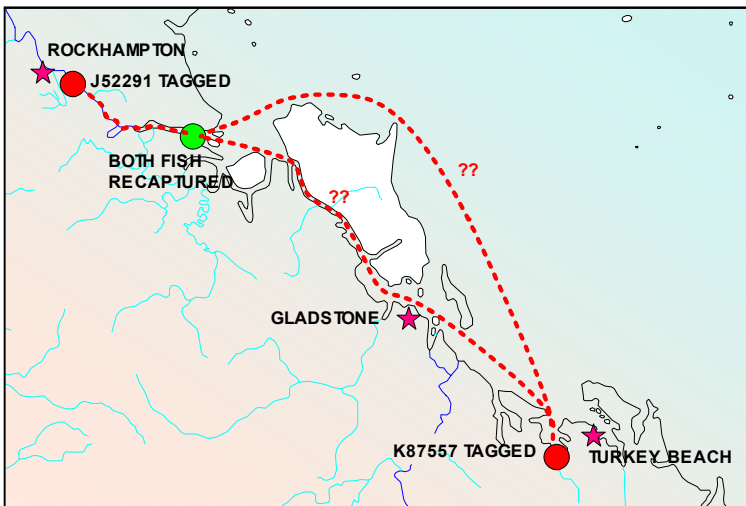
Tag Details for N55298 Red Emperor

Tagger	Date	Length	Location
Tony Stewart	9/6/02	360	Wide Bay

Recapture Details

Angler	Date	Days Out	Length	Growth
R Buckley	22/6/02	13	360	0
Ness	3/7/02	11	370	10
R Kelly	15/9/02	74	365	-5

This recapture is the first evidence of a movement pattern for Red Emperor, thanks to accurate location details provided by GPS. When recaptured the first time it was caught 3km north of where it was tagged. The second recapture occurred at the same location while the third one was back at the place where the fish was tagged. While fish are regularly recaptured in the same location they were tagged it is not often that we get evidence of fish moving to another location and then returning.



Tag details Recapture details

Tag	J52291	
Species	Barramundi (<i>Lates calcarifer</i>)	
Date	22/1/00	19/10/02
Length	380mm	880mm
Location	Fitzroy River	Fitzroy River
Fisher	Ken Brett	Eric Baker
Days Out	1001	
Growth	500mm (0.5mm/day)	
Movement	40km down river	
Released	No	

Tag details Recapture details

Tag	K87557	
Species	Barramundi (<i>Lates calcarifer</i>)	
Date	21/3/98	23/10/02
Length	555mm	945mm
Location	7 Mile Ck	Fitzroy River
Fisher	Tony Bruse	Eric Baker
Days Out	1677	
Growth	390mm (0.23mm/day)	
Movement	125km north along coast	
Released	No	

Here are 2 fish recaptured by a commercial fisher at the same location but tagged well away from that spot and coming from different directions.

